

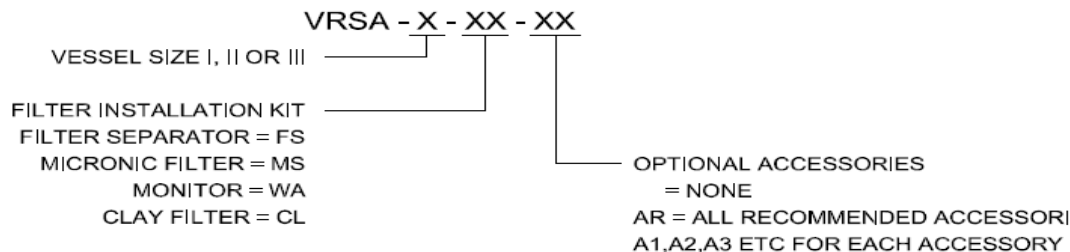
## VRSA – Series filters



- *Compact*
- *Flexible Filtration*
- *Multipurpose Design*
- *Simplified Maintenance*

- *Micronics*
- *Water separator*
- *Monitors*
- *Clay filters*

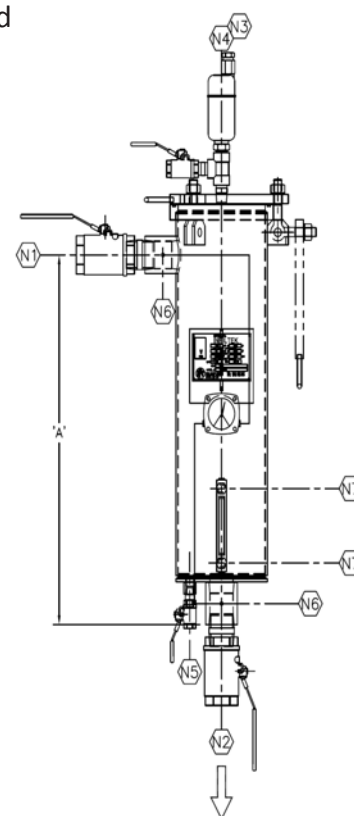
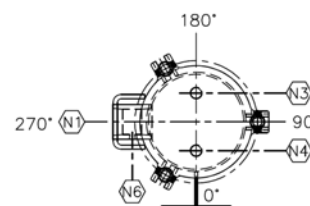
# VRSA –SERIES VERTILCAL FILTERS



## Technical details

**Infiltek VRSA** Series filter vessels offer a versatile, economical alternative to. Industry applications include removing liquid, solid and chemical contaminants with easy conversion to a prefilter, filter/separator, clay or monitor by changing internal components or flow direction or by selecting optional filter cartridges when ordering

The VRSA can be used on mobile refuelling equipment, fuelling cabinets and for fixed fuelling installations



### MULTI-PURPOSE DESIGN

MODEL	VRSA-I	VRSA-II	VRSA-III
DIM 'A'	29-3/4"	44-3/4"	59-3/4"

Dry Weight	45 kg	53 kg	64 kg
------------	-------	-------	-------

#### OPTIONAL FILTER ELEMENT INSTALLATION KITS

-WA	1	MONITOR	FUEL MONITOR FILTER ELEMENT INSTALLATION KIT C/W CENTER ROD, END CAP, ETC
-FS	1	FIL/SEP	FILTER SEPARATOR ELEMENT INSTALLATION KIT C/W CENTER ROD, CENTER SEALS, END CAPS,
-MS	1	MICRONIC	MICRONIC FILTER ELEMENT INSTALLATION KIT C/W CENTER ROD, CENTER SEALS, END CAPS,
-CL	1	CLAY	CLAY FILTER ELEMENT INSTALLATION KIT C/W CENTER ROD, CENTER SEALS, END CAPS,

The VRSA has two filter mounting possibilities, one being a bulk head mounting bracket that is adjustable, and the other is three mounting legs with holes drilled for stabilization.

#### FEATURES

- RUGGED CARBON STEEL CONSTRUCTION
- EASY ACCESS SWINGBOLT CLOSURE
- ACCEPTS FACET, RACOR AND VELCON FILTER ELEMENTS
- AVAILABLE WITH EPOXY LINING
- ASME 'UM' STAMPED RATED AT 150 PSI MAWP
- EASILY FIELD CONVERTED
- VESSEL IS CUSTOMIZABLE TO SUIT CUSTOMER NEEDS
- AVAILABLE IN STAINLESS STEEL AND ALUMINUM

#### APPLICATIONS

- Jet Fuel
- Avgas
- Motor Gasoline
- Diesel Fuel
- Kerosene
- Turbine Lube Oil
- Insulating Oil
- Biodiesel Blends

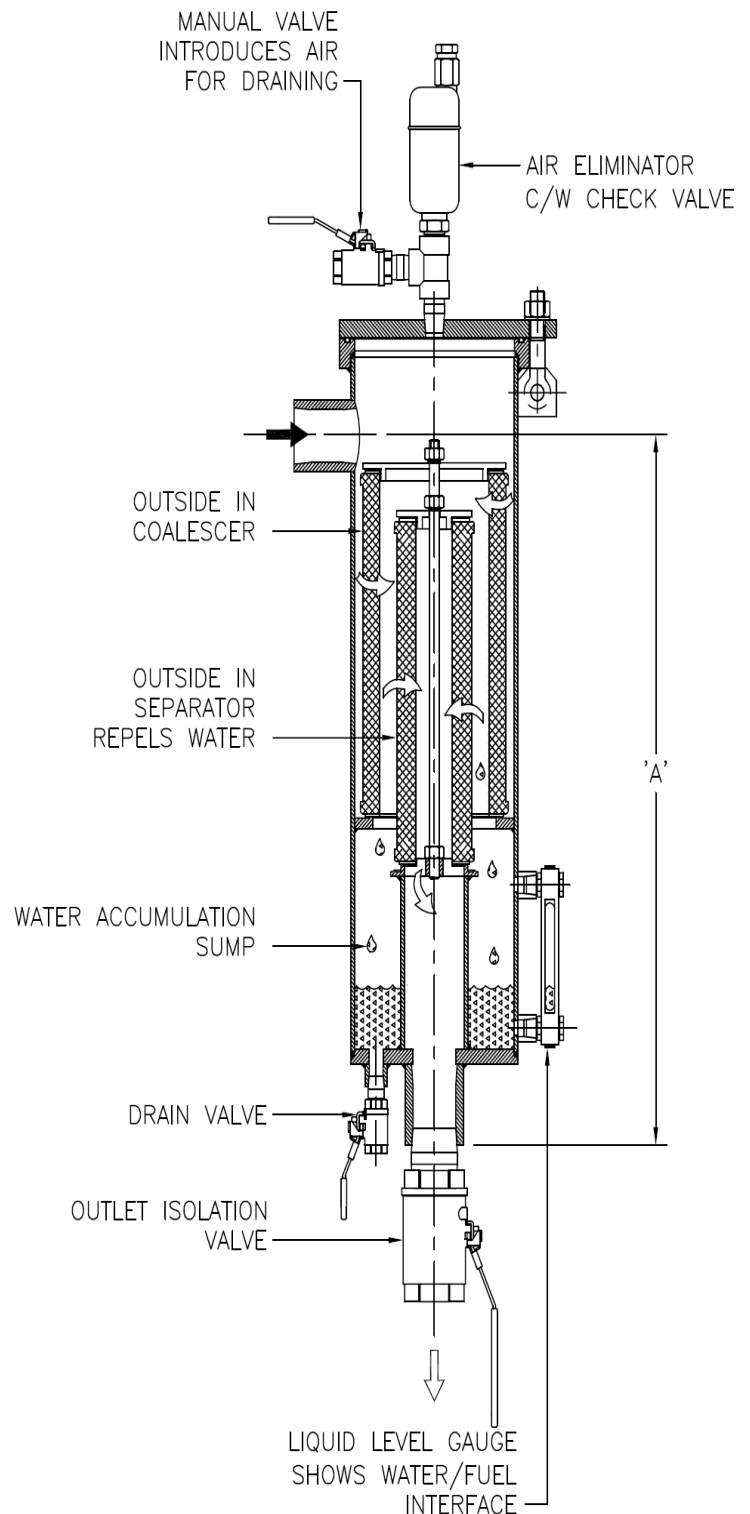
# VRSA – FS Filter Separator Configuration

<b>-FS SERIES FILTER SEPARATOR</b>			
DIM.	VRSA-I	VRSA-II	VRSA-III
A	29-3/4"	44-3/4"	59-3/4"
ELEMENTS	QTY=1	QTY=2	QTY=3
COALESCER	RCC-813-1	RCC-813-1	RCC-813-1
SEPARATOR	RSC-410	RSC-410	RSC-410
ELEMENTS	QTY=1	QTY=2	QTY=3
COALESCER	RCC-813-25	RCC-813-25	RCC-813-25
SEPARATOR	RSC-410	RSC-410	RSC-410
FLOW			
DIESEL	25 GPM	50 GPM	75 GPM
KEROSENE	50 GPM	100 GPM	150 GPM

VRSA-FS Series for liquid/liquid separation using the correct combination of hydrocarbon coalescer cartridges and second stage separator cartridges will provide the highest degree of water and solids removal. The first stage coalescing cartridge provides filtration as well as coalescing of free and emulsified water. The second stage separator is a hydrophobic barrier designed to repel the coalesced water droplets. The water droplets will fall and collect in the sump for removal.

## RECOMMENDED ACCESSORIES

- A1, INLET ISOLATION VALVE
- A2, OUTLET ISOLATION VALVE
- A3, AIR ELIMINATOR
- A4, PRESSURE RELIEF VALVE
- A5, DRAIN VALVE
- A6, DELTA P GAUGE
- A7, LIQUID LEVEL GAUGE



Filter / Water Separator

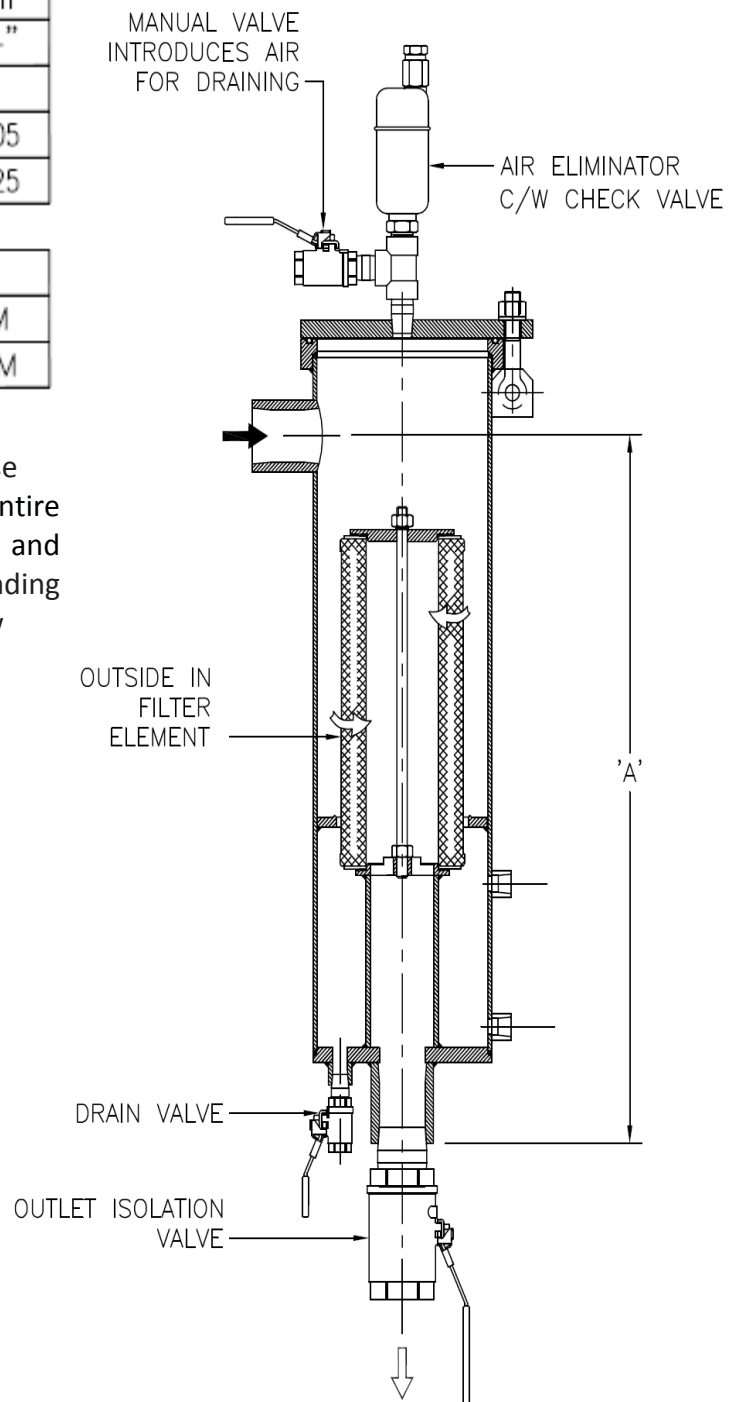
# VRSA – WA Monitor Filter Configuration

<b>-WA SERIES MONITOR MODEL#</b>			
DIM.	VRSA-I	VRSA-II	VRSA-III
A	29-3/4"	44-3/4"	59-3/4"
ELEMENTS	QTY=1	QTY=2	QTY=3
5 MICRON	RLWA-61405	RLWA-61405	RLWA-61405
25 MICRON	RLWA-61425	RLWA-61425	RLWA-61425
FLOW			
DIESEL	30 GPM	58 GPM	88 GPM
KEROSENE	60 GPM	118 GPM	174 GPM

**VRSA-WA Series** can be used in several ways. To remove solid contaminants from a flow stream, use the vessel with Fuel Monitor cartridges, check the entire flow of fuel, collecting solids, absorbing water and ensuring only clean and dry fuel for delivery. Depending of type of element can change the direction of flow

## RECOMMENDED ACCESSORIES

- A1, INLET ISOLATION VALVE
- A2, OUTLET ISOLATION VALVE
- A3, AIR ELIMINATOR
- A4, PRESSURE RELIEF VALVE
- A5, DRAIN VALVE
- A6, DELTA P GAUGE



Monitor Filter

# VRSA – MS Micronics Filter Configuration

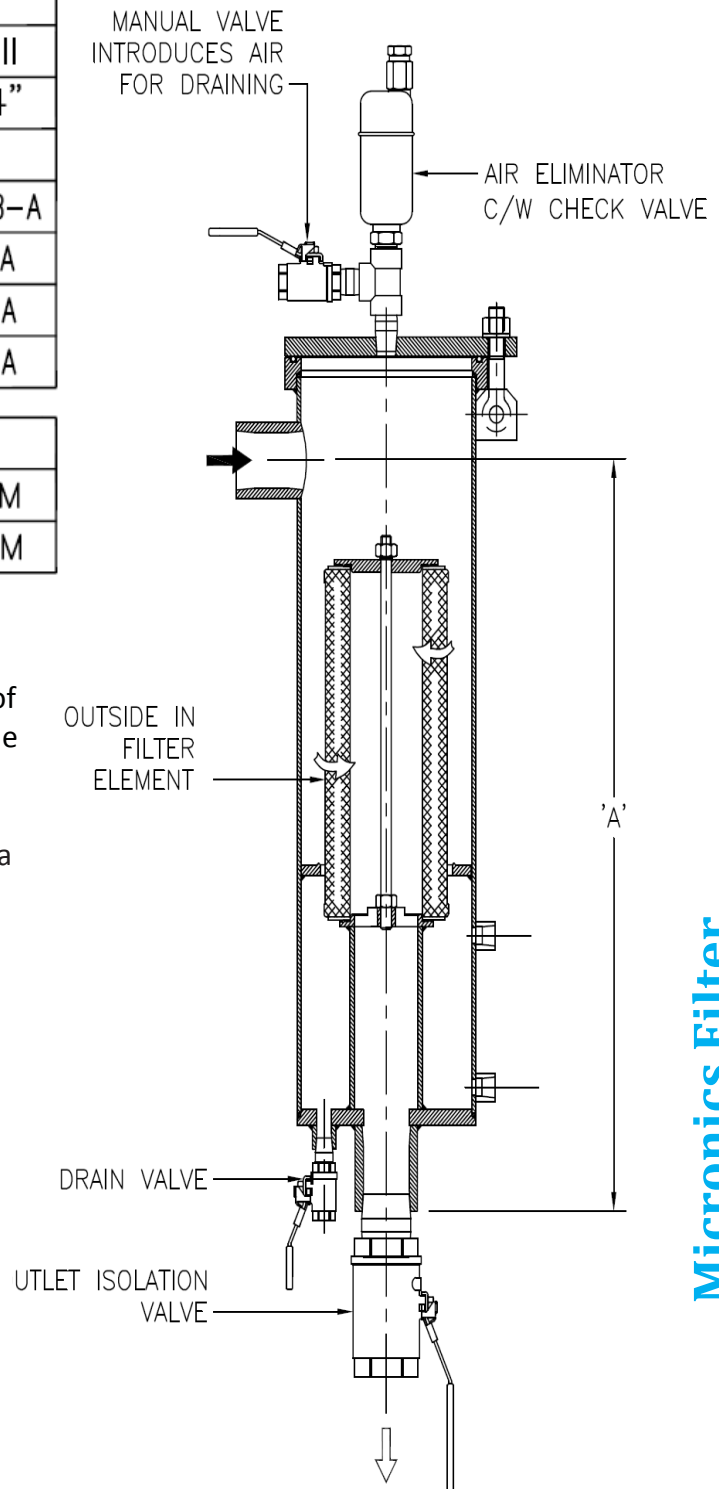
<b>-MS SERIES MICRONIC FILTER</b>			
DIM.	VRSA-I	VRSA-II	VRSA-III
A	29-3/4"	44-3/4"	59-3/4"
ELEMENTS	QTY=1	QTY=2	QTY=3
.5 MICRON	RL-614-1AB-A	RL-614-1AB-A	RL-614-1AB-A
1 MICRON	RL-614-1A	RL-614-1A	RL-614-1A
2 MICRON	RL-614-2A	RL-614-2A	RL-614-2A
5 MICRON	RL-614-5A	RL-614-5A	RL-614-5A
FLOW			
DIESEL	50 GPM	100 GPM	150 GPM
KEROSENE	66 GPM	133 GPM	200 GPM

VRSA – MS s high efficiency micro filter series cartridges. These filter housings are designed for removing solid contaminants such as dirt, rust, pipe scale and other types of solids from fuels. VRSA –MS vessels are designed for a single pass through the high efficiency cartridges providing clean product downstream can be used in two ways. To remove solid contaminants from a flow stream, use the vessel with a pleated media filter.

When used with *monitor* cartridges the VRSA will remove solid contaminants and free water by absorption

## RECOMMENDED ACCESSORIES

- A1, INLET ISOLATION VALVE
- A2, OUTLET ISOLATION VALVE
- A3, AIR ELIMINATOR
- A4, PRESSURE RELIEF VALVE
- A5, DRAIN VALVE
- A6, DELTA P GAUGE



Micronics Filter

# VRSA – CL Clay Filter Configuration

## -CL SERIES CLAY FILTERS

DIM.	VRSA-I	VRSA-II	VRSA-III
A	29-3/4"	44-3/4"	59-3/4"
ELEMENTS	N/A	QTY=1	QTY=2
80 MESH	N/A	FCC-71801	FCC-71801
FLOW			
INSUL. OIL		1 GPM	2 GPM
KEROSENE		7.5 GPM	15 GPM

The **VRSA –CL** Series Vessels are used with clay elements to remove additives and surfactants by adsorption from industrial oil system or fuel as jet fuel, gasoline, kerosene and diesel. Carbon elements are used for deoiling industrial water, deodorization and decolorization of Hydrocarbon solvents and the removal of chlorine.

## RECOMMENDED ACCESSORIES

- A1, INLET ISOLATION VALVE
- A2, OUTLET ISOLATION VALVE
- A3, AIR ELIMINATOR
- A4, PRESSURE RELIEF VALVE
- A5, DRAIN VALVE
- A6, DELTA P GAUGE

