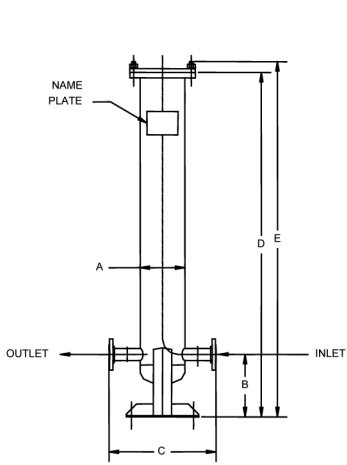
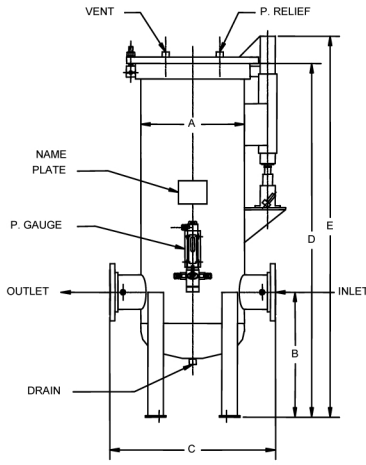


# MICRONIC FILTERS

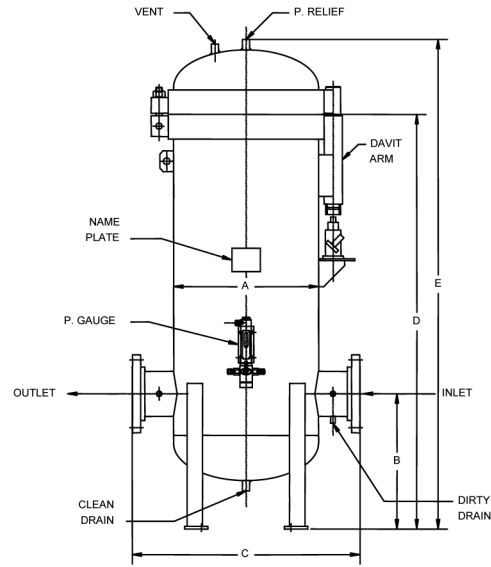
## MF - SERIES



TYPE 1



TYPE 2



TYPE 3

These prefilter housings are available in several standard sizes to accommodate specific flow and filtration requirements. Having no internal moving parts, Series MF prefilter housings are designed to provide easy servicing. Each housing is built to ASME Code, Section VIII.

VESSEL MODEL #	JET FUEL CAPACITY GPM	DIESEL CAPACITY GPM	VESSEL DIMENSIONS					IN/OUT
			A	B	C	D	E	
MF - 814	50	40	8 5/8	6	16 3/4	24	26	2
MF - 828	100	81	8 5/8	6	16 3/4	38	40	2
MF - 836	140	112	8 5/8	6	16 3/4	48	50	2
MF - 844	150	120	8 5/8	8	16 3/4	56	58	3
MF - 1428	300	240	14	13	22	48	52	3
MF - 1436	420	336	14	13	22	56	60	4
MF - 1636	560	448	16	14	24	58	62	4
MF - 1644	600	480	16	14	24	66	70	4
MF - 1836	700	560	18	16	26	62	68	6
MF - 1844	750	600	18	16	26	70	78	6
MF - 2036	840	676	20	18	30	65	73	6
MF - 2044	900	720	20	18	30	73	81	8
MF - 2436	1120	896	24	20	34	67	75	8
MF - 2444	1200	960	24	20	34	75	83	8
MF - 2836	1540	1232	28	22	40	70	79	8
MF - 2844	1650	1350	28	22	40	78	87	8
MF - 3236	1820	1456	32	24	44	74	84	8
MF - 3244	1950	1560	32	24	44	82	92	8
MF - 3636	2800	2240	36	26	48	74	88	10
MF - 3644	3000	2400	36	26	48	82	96	10
MF - 3656	4000	3200	36	26	48	94	108	12
MF - 4244	3900	3120	42	28	54	85	102	12
MF - 4256	5200	4160	42	28	54	96	113	14
MF - 4844	5100	4080	48	30	60	88	108	14
MF - 4856	6800	5440	48	30	60	100	120	14
MF - 5444	6900	5520	54	32	70	92	114	14
MF - 5456	9200	7360	54	32	70	104	126	16
MF - 6044	7500	6000	60	34	76	96	120	16
MF - 6056	10000	8000	60	34	76	108	132	16

### STANDARD HOUSING DESIGN

- Welded Carbon Steel Construction
- ASME Code, Section VIII Construction (stamped and certified optional)
- Design Pressure 150psi @250°F
- Swing Bolt Head Closure
- Buna-N Closure Gasket
- Rod Mount Cartridge Hardware
- Knife Edge Cartridge Mounting Seals

### CONNECTIONS

- Flanged Inlet/Outlet: 150#RF50
- Side/Bottom Drain Cplg: NPT 3000#
- Vent/Relief Valve Cplg.: 3/4" NPT 3000#
- Pressure Gauge Cplg.: 3/4" NPT 3000#

### OPTIONS

- Air Eliminator
- Differential Pressure Gauge
- Pressure Relief Valve
- Drain Valve

VESSEL TYPE 1 - Ø8 5/8"  
 VESSEL TYPE 2 - Ø14" & Ø16"  
 VESSEL TYPE 3 - Ø18" & UP

NOTES: SPECIFICATION AND SIZES CAN CHANGE WITHOUT PRIOR NOTICE; FOR REFERENCE ONLY; NOT TO BE USED FOR PRE-PIPING WORK; NOT TO SCALE  
 ACCURATE DIMENSIONS AND DETAILS WILL BE ISSUED WITH ENGINEERING DRAWING



385 Watline Avenue, Mississauga, Ontario, L4Z 1P3