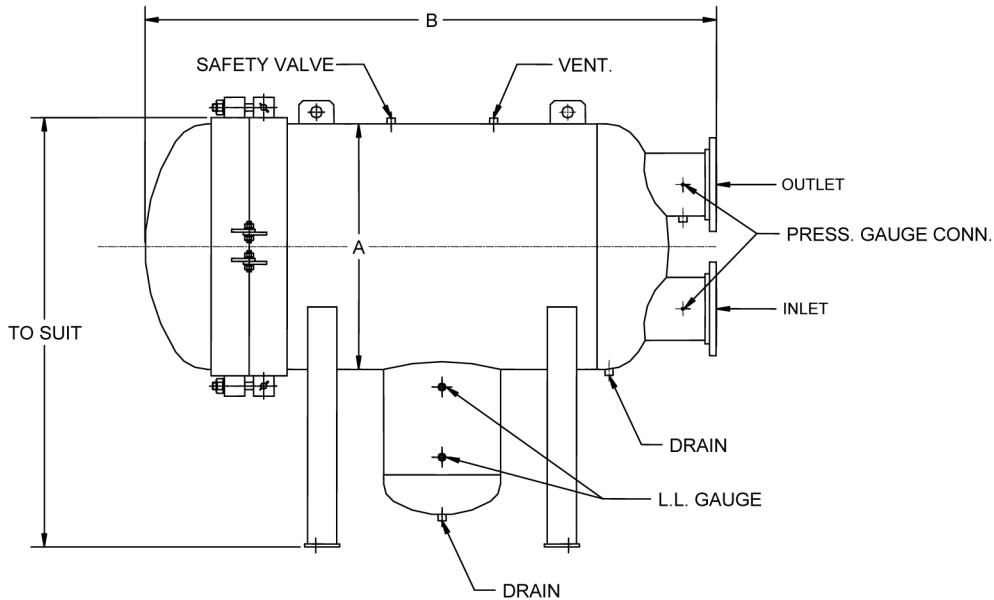


# FILTER SEPARATOR

## HORIZONTAL-TWO STAGE



The horizontal filter/separator design provides more convenient access to the cartridges than the vertical design. The end opening hinged cover swings open and the mounting assembly for both stages of cartridges is exposed for service. For refuelers and hydrant carts, saddle type legs and short sump is supplied.

VESSEL MODEL #	CAPACITY		DIMENSIONS (in)		WEIGHT	IN/OUT SIZE
	gpm	l/min	A	B	lb.	in.
HB-1414	50	200	14	22	180	2
HB-1422	100	400	14	32	300	3
HB-1633	150	600	16	43	470	3
HB-1638	200	800	16	53	532	3
HB-1833	300	1150	18	43	540	4
HB-2033	400	1420	20	53	625	4
HB-2238	500	1800	22	55	725	4
HB-2438	600	2250	24	58	760	6
HB-2833	720	2700	28	56	875	6
HB-2838	850	3200	28	60	1065	6
HB-2844	1000	3800	28	66	1295	6
HB-2856	1200	4550	28	73	1370	8
HB-3656	1600	6000	36	84	2090	10
HB-4256	2000	7600	42	90	2800	12
HB-4856	2600	9850	48	90	3800	12
HB-5456	3600	13650	54	102	6500	12
HB-6056	4000	15200	60	108	8400	14

### STANDARD HOUSING DESIGN

- Welded Carbon Steel Construction (other materials available on request)
- ASME Code, Section VIII Construction (stamped and certified optional)
- Design Pressure 150psi @250°F (other design pressures available on request)
- Interior Epoxy Coated
- Exterior Prime Coated
- Swing Bolt Head Closure
- Hinged End Opening Cover
- Buna-N O-Ring Closure Seal
- Rod or Screw Base Coalescer Cartridge
- Knife Edge Cartridge Mounting Seals
- Spider Plate Attached to Vessel Wall

### CONNECTIONS

- Flanged Inlet/Outlet: 150#RFSO
- Side/Bottom Drain Cplg.: 3/4" NPT 3000#
- Vent/Relief Valve Cplg.: 3/4" NPT 3000#
- Pressure Gauge Cplg.: 3/4" NPT 3000#

### ACCESSORIES

- Automatic Air Eliminator
- Pressure Relief Valve
- Differential Pressure Gauge
- Water Slug Control Valve
- Drain Valve

NOTES: SPECIFICATION AND SIZES CAN CHANGE WITHOUT PRIOR NOTICE; FOR REFERENCE ONLY; NOT TO BE USED FOR PRE-PIPING WORK; NOT TO SCALE  
ACCURATE DIMENSIONS AND DETAILS WILL BE ISSUED WITH ENGINEERING DRAWING



385 Watline Avenue, Mississauga, Ontario, L4Z 1P3